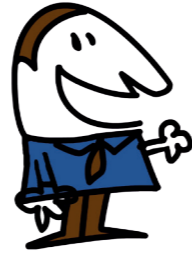
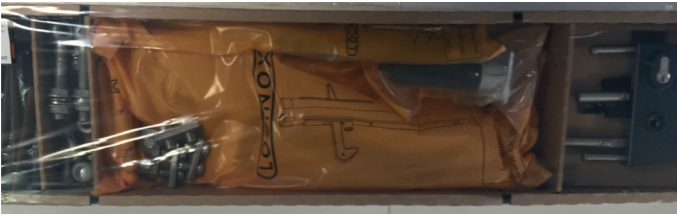


Das Handbuch für 2 flg.
Baukasten-System Tore

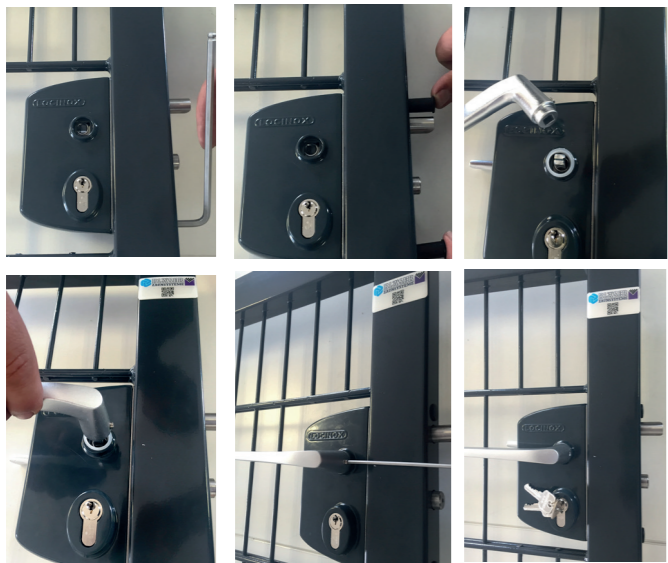


1



Montage des
Schloßkastens in den
Gehflügel

2



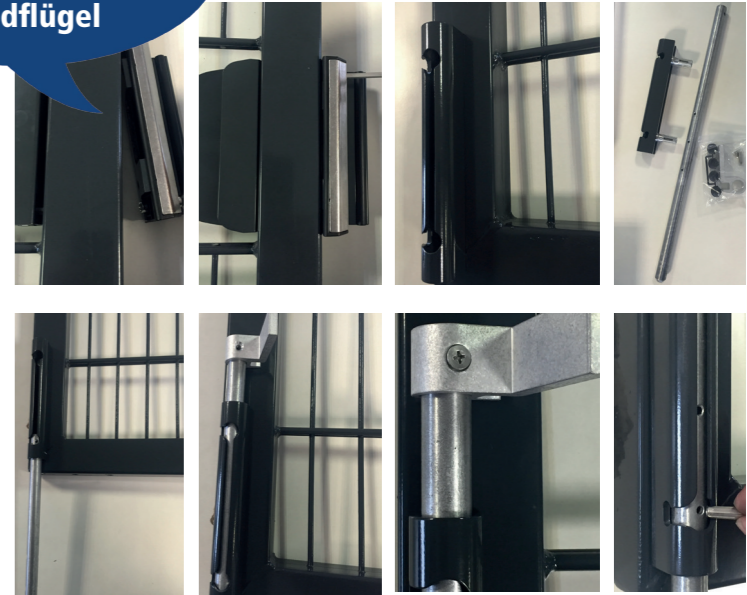
Montage der
Blende in den
Standflügel

3

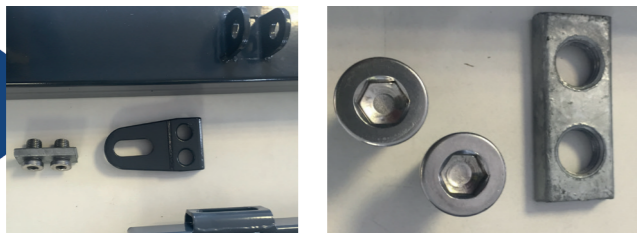


Montage des
Anschlagblechs und des
Mittelfeststellers in den
Standflügel

4



Montage der
Gehängeplatten
in beide Flügel

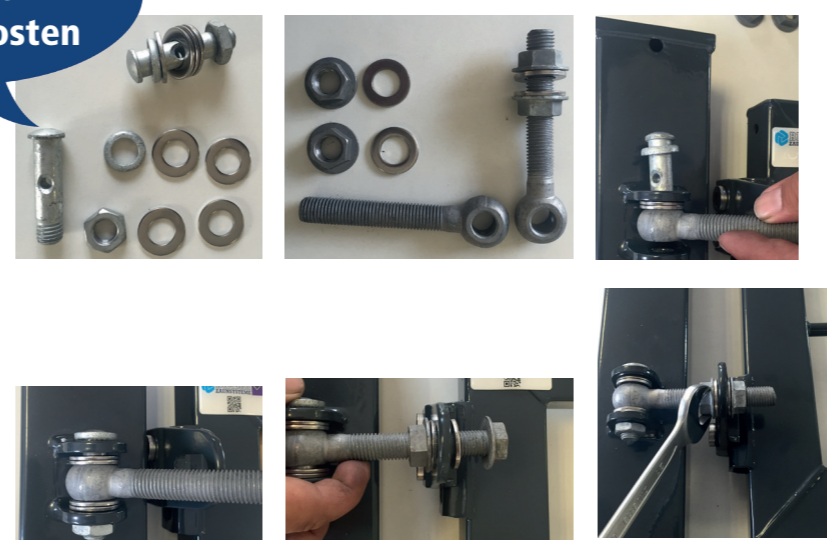


5



Montage der
Torbänder in
beide Pfosten

6



Fertig!



7

